



INDOFINE Chemical Company, Inc.

121 Stryker Lane, Bldg. 30, Suite 1 • Hillsborough, NJ 08844 • U.S.A.

Phone: (908) 359-6778 • FAX: (908) 359-1179

website: www.indofinechemical.com

e-mail: chemical@indofinechemical.com

CERTIFICATE OF ANALYSIS

Catalog Number: 020541S

Product Name: **OSTHOL with HPLC**
(Osthenol methylester)

CAS Number: [484-12-8]

Lot Number: 1706829

Chemical Formula: C₁₅H₁₆O₃

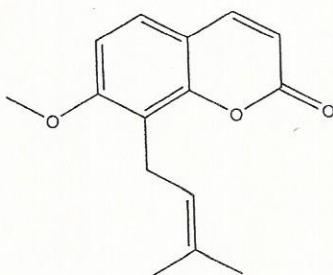
Molecular Weight: 244.29

Appearance: Off-white powder

Loss on Drying: 1.72%

Storage: Store at 2-8°C

Purity(HPLC): 99.52%





INDOFINE Chemical Company, Inc.

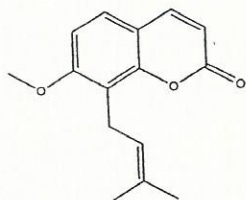
121 Stryker Lane, Bldg. 30, Suite 1 • Hillsborough, NJ 08844 • U.S.A.

Phone: (908) 359-6778 • FAX: (908) 359-1179

website: www.indofinechemical.com

e-mail: chemical@indofinechemical.com

HPLC ANALYSIS



Catalog No.: 020541S

Product Name: Osthol

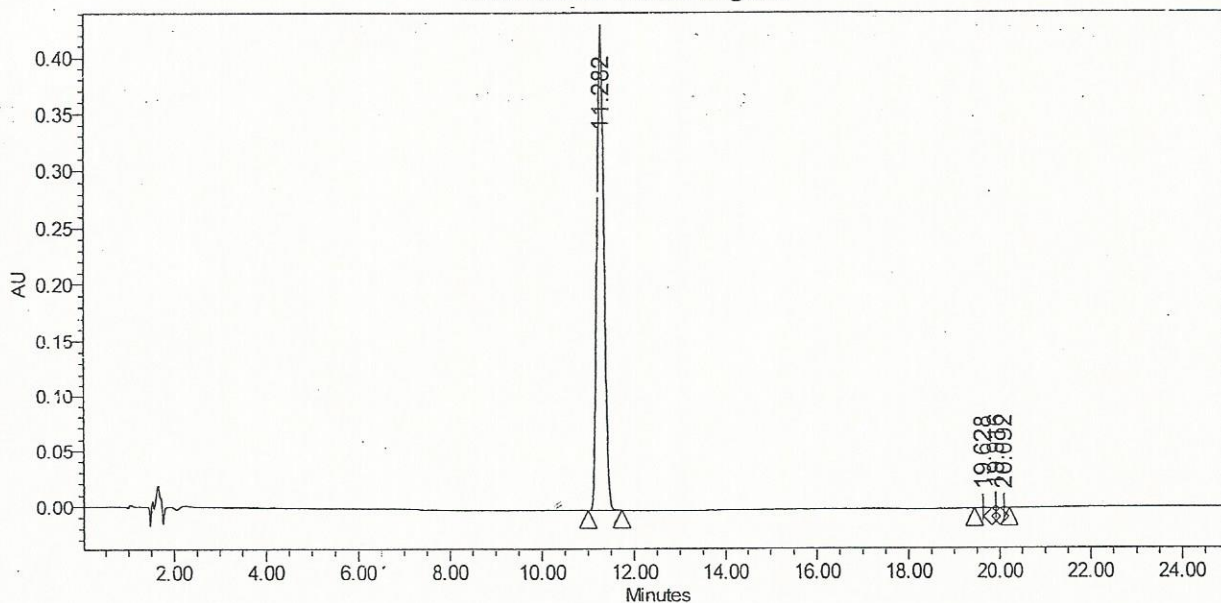
Lot No.: 1706829

SAMPLE INFORMATION

Sample Name: Osthol
Sample Type: Unknown
Vial: 52
Injection #: 1
Injection Volume: 5.00 ul
Run Time: 25.0 Minutes

Acquired By: System
Sample Set Name:
Acq. Method Set: Osthol
Processing Method: Samples
Channel Name: 278.0nm
Proc. Chnl. Descr.: PDA 278.0 nm

Auto-Scaled Chromatogram



Peak Results

Name	RT	Area	% Area	USP Plate Count	USP Resolution
1	11.282	4595570	99.52	24476.70	
2	19.628	7063	0.15	152190.87	30.05
3	19.916	9014	0.20	527111.28	1.51
4	20.092	6150	0.13	552220.22	1.56